

NOTES

**INTERNAL WALLS -**  
SINCE INTERNAL WALLS ARE FACEBRICK, ALL WATER, ELECTRICAL AND GAS INSTALLATIONS TO BE DISCUSSED AND AGREED ON SITE PRIOR ERECTION OF WALLS STARTS. NO CHASING IS POSSIBLE AND NO SURFACE MOUNTED SERVICES IS ALLOWED.

**FURNITURE -**  
FOR LOOSE AND FIXED FURNITURE REFER TO FURNITURE SCHEDULE AND JOINERY DRAWINGS.

**SOLAR SHADING**  
VERTICAL OR HORIZONTAL SHADING DEVICES TO BE IMPLEMENTED TO EACH BLOCK INDIVIDUALLY AND AS NECESSARY TO FURTHER DETAILS.

**STORM WATER**  
POSITION OF TANKS AND CONCRETE RAINWATER CHANNEL TO SUIT SITE CONDITIONS AS PER SITE LAYOUTS TO ACCOMMODATE STORMWATER AND OVERFLOW, TO CIVIL ENG'S DESIGN AND DETAIL

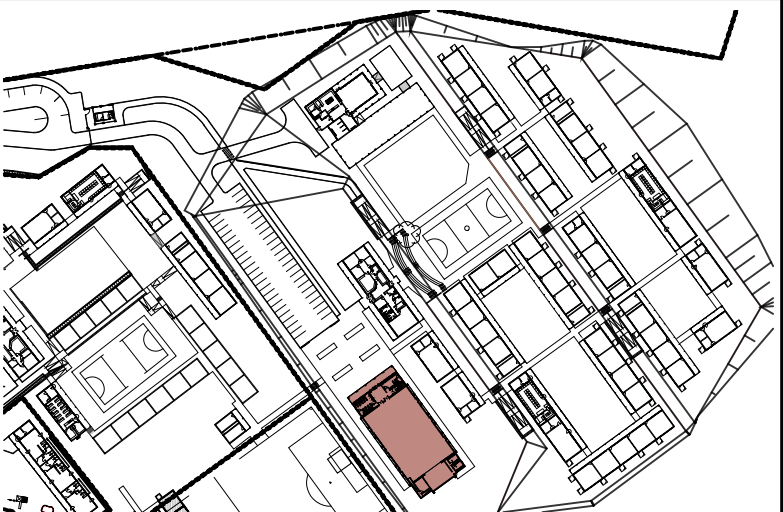
**WINBLOCKS**  
REFER TO ELEVATIONS FOR POSITION OF WINBLOCKS

**TRUSS**  
TRUSS MANUFACTURE TO SUBMIT A WORKSHOP DRAWING FOR APPROVAL

NO.	DATE	REVISION	DRAWN
A	2017-05-12	ISSUED FOR MEASURE	SG
B	2021-03-01	ISSUED FOR INFORMATION i) ADDED STORE ROOM 2 ii) ADDED TUCKSHOP iii) CHANGED 330 x 330mm VERANDAH COLUMNS TO 100 x 100mm STEEL POSTS iv) VARIOUS GENERAL NOTE UPDATES	DW RJS
C	2022-07-08 2022-04-13	ISSUED FOR MEASURE ISSUED FOR INFORMATION (EFWS) 1. DWG NO. CHANGED FROM 1617 TO 2204	DW
AA	2022-09-19	ISSUED FOR MEASURE IN PREVIOUS REV C LEVELS INDICATED USING 100.000 AS T.O.C.	DW

ISSUED FOR  
APPROVAL

KEY



PSP

ARCHITECT



ARCHITECTURAL PROFESSIONAL SACAP NUMBERS:  
**H.L. MANTEL SACAP 3045**

IMPLEMENTED BY

**INDEPENDENT  
DEVELOPMENT  
TRUST**

SIGNATURE	DATE	SHEET NO.
DESIGNED		<b>A1</b>
DRAWN		SCALE
VERIFIED		STATUS
VALIDATED		1 = INFORMATION FA = FOR APPROVAL T = TENDER C = CONSTRUCTION AB = AS BUILT

CLIENT



IMPLEMENTING  
AGENT



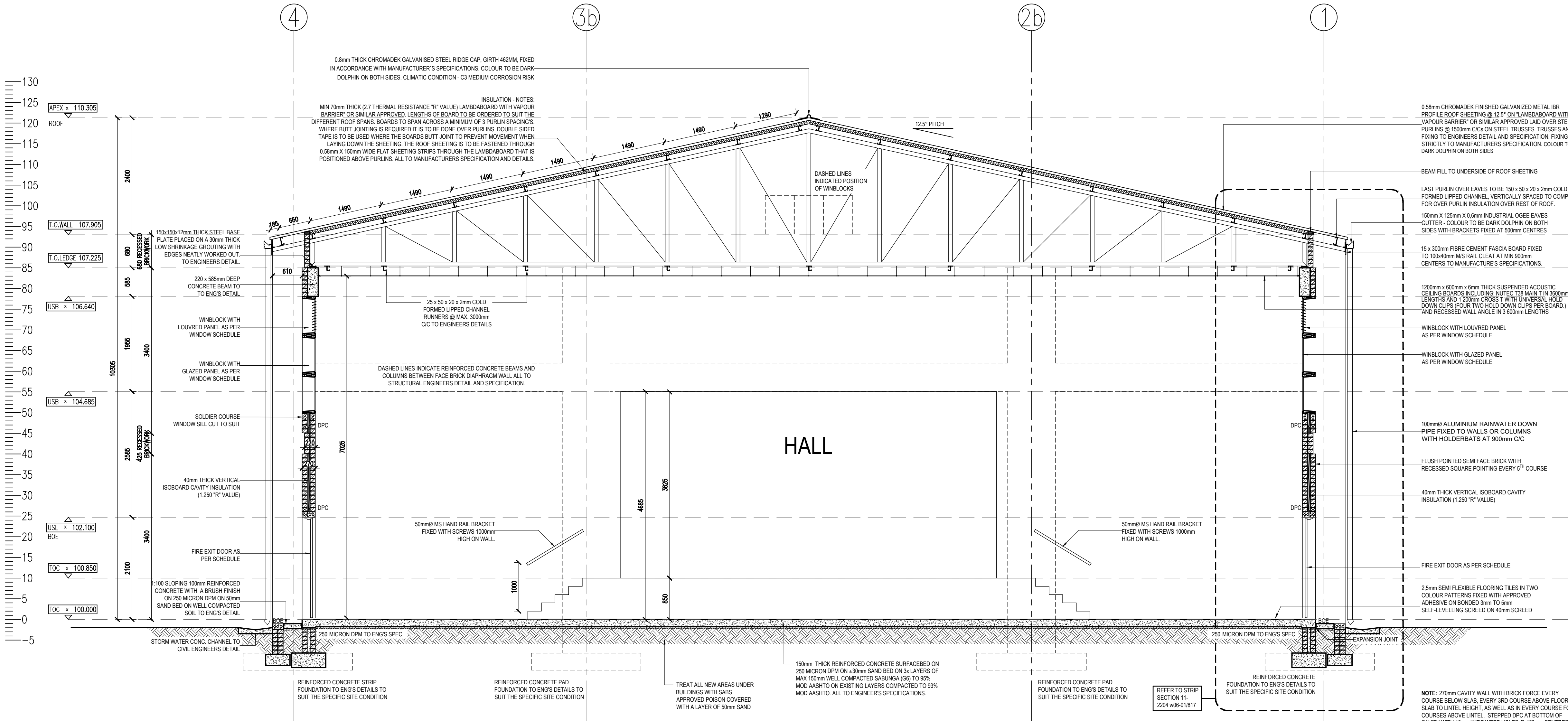
**PROJECT**  
**DOE PORTFOLIO PROGRAMME**  
**ESTABLISHMENT OF NEW SCHOOLS**  
**HILLBROW - SENIOR SECONDARY SCHOOL**  
PROVINCE: EASTERN CAPE PROVINCE

**DRAWING TITLE**  
**MULTI-PURPOSE HALL (BLOCK S-Y)**  
**SECTION C-C**

DRAWING DESCRIPTION

--

EMIS NUMBER	DISCIPLINE	DRAWING NUMBER	STATUS	REVISION
200500293	ARCH	2204 w03-07/302	FA	AA



SECTION C-C  
SCALE 1:50